

AUGUST 2020

BE FIERCE

THE OFFICIAL NEWSLETTER OF THE
BE FIERCE FOUNDATION



SNEAK PEEK OF WHAT'S INSIDE:

[A note from Mike & Katie](#)

[Midyear recap](#)

[What's upcoming](#)

[New board members](#)

Midyear Update 2020

From founders Katie & Mike Kyne

As the COVID-19 pandemic spreads globally, our hearts remain with all those who have been impacted by the pandemic. The effects have been far reaching and we know that families battling rare or undiagnosed conditions face extra challenges, both medically and financially.

During these uncertain times, our passion at Be Fierce to bring greater awareness to rare/undiagnosed conditions and to drive positive change is stronger than ever—and needed more than ever before. Although our community events and volunteer opportunities will look a little different in the coming months, we are excited to share with you some of the ways we can continue to make a difference together...even while keeping a safe distance!



But first...

Your support and generosity are making a positive impact in the lives of kids and families who are affected by rare conditions—families like ours. Aubrey's spirit and love was the catalyst for Be Fierce but it's your support that has allowed us to continue building momentum. We are humbled every day by your support.

Thank you!



Here's a little of what we have been up to at Be Fierce in the first half of 2020 and a look at what's yet to come.

GLOW GALA

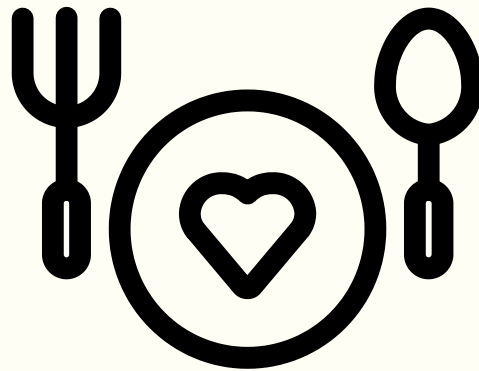
A couple weeks before the U.S. closed down, we took over the DoSeum in San Antonio for an unforgettable celebration for Rare Disease Day. With more than 200 people in attendance, we danced the night away under blacklights and raised awareness for the more 25 million people who are affected by rare conditions in the U.S. A big thank you to all who were able to join the fun!



COVID-19 Support Grants - As the pandemic and economic crisis took hold, we knew families facing rare conditions could be especially vulnerable. Since May, Be Fierce has awarded nearly \$5,000 to families with a child with a rare condition and who had been financially impacted. Grants went directly to the families to cover household bills, including rent or mortgage payments in many cases, and medical supplies for the child.



Ronald McDonald Houses - Special donations to RMH in San Antonio, St. Petersburg and Denver were made to support meals and the extra supplies needed to keep the families in residence safe.



What's next

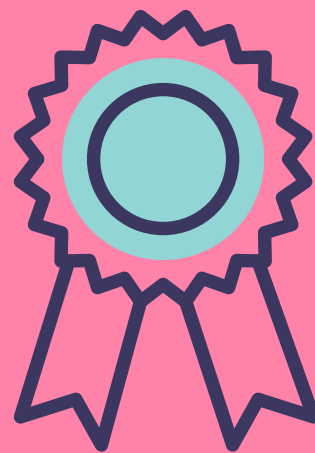
Second Round: COVID-19 Support Grants - Financial aid is still the biggest and most pressing need for the families in the rare/undiagnosed community. In honor of Aubrey's eighth birthday we are pledging another round of grants through the end of September, her birthday month.

Care Packages - We love a good care pack party at Be Fierce! While it's not yet safe to host a care pack assembly party, we have been in contact with the Undiagnosed Disease Network (UDN) and hope to supply welcome care packs to families whose cases are being reviewed through the UDN. The UDN may be a family's last hope for finding a diagnosis. Aubrey's case was reviewed by the UDN, and although the experts ultimately could not find an answer, we will forever be grateful for the opportunity.

2020 Be Fierce 4th Annual Toy Drive: At this time, we believe we can hold our holiday toy drive for kids who will be in the hospital over the holiday season. The drive is relatively low risk and as we get closer to the holidays we will let you know of any specifics the hospitals may require this year (e.g. no plush toys, must be packaged, etc.).

RARE DISEASE DAY 2021

More to come...but get ready to lace up your shoes and get moving (or wheeling!) for a special virtual activity to raise awareness for rare and undiagnosed diseases!



New Board Members: Marissa & Slade

And, lastly, we would be remiss by not giving a warm welcome and congratulations to Be Fierce's newest board members: **Marissa Patterson** and **Slade Syrdahl**. Both have been longtime supporters of the foundation and advocates within the special needs community. We are thrilled to welcome them in an official capacity to Be Fierce and look forward to seeing how their experience and expertise will help us continue to do more in Aubrey's legacy. You can read more about Marissa, Slade and the entire Be Fierce team on our website: www.befierce.org.



Marissa (far right) with husband Mike and kids Chase and Jocelyn



Slade (left) with wife Jenna (also a board member) and daughters Alyssa and Emma



From our family to yours, we wish you well and hope for brighter days to come.

Mike & Katie Kyne
Be Fierce Co-founders



BE BRAVE
BE KIND
BE FIERCE